



# GUIDE RAILS

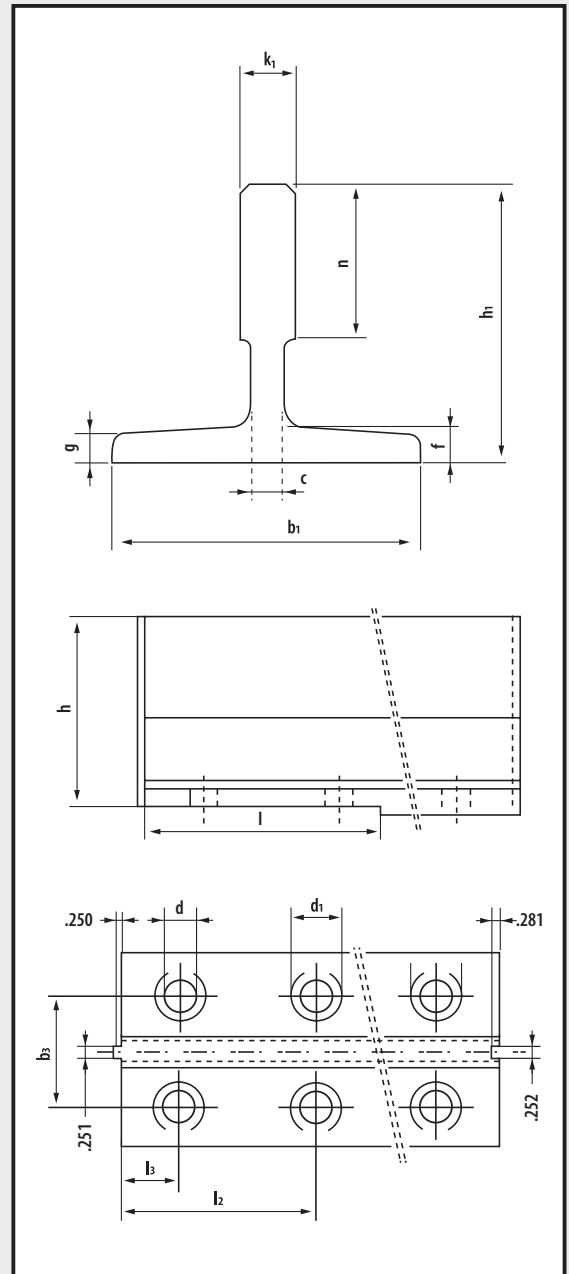


AFD is the exclusive distributor of Savera elevator guide rails in North America. Contact us for available sizes and your immediate shipping needs.

SUPER rails meet or exceed the requirements of ISO 7465. SUPER offers the best performance in the industry for a "standard" rail.

EXTRA rails meet or exceed the requirements of ISO 7465 (Class 1) and offer 100% control of straightness. When ride quality is important in high-rise installations, EXTRA is for you.

STAR rails are the ultimate in quality and performance. The tolerances and straightness of STAR rails are unique to the entire industry. STAR is a must for high-speed high rise projects. STAR PLUS is the highly acclaimed rail system for the ultimate in ride quality.



| Rail                       | Weight | b <sub>1</sub> | h <sub>1</sub> | h     | l     | k <sub>1</sub> | n     | c    | g    | f     | d    | d <sub>1</sub> | b <sub>3</sub> | l <sub>2</sub> | l <sub>3</sub> |
|----------------------------|--------|----------------|----------------|-------|-------|----------------|-------|------|------|-------|------|----------------|----------------|----------------|----------------|
| <b>T89-B</b><br>(T-161)    | 8.27   | 3.504          | 2.441          | 2.402 | 6.142 | .630           | 1.339 | .394 | .311 | .437  | .512 | 1.024          | 2.252          | 4.500          | 1.500          |
| <b>T127-1/B</b><br>(T-709) | 11.94  | 5.000          | 3.504          | 3.465 | 6.142 | .630           | 1.772 | .394 | .315 | .433  | .669 | 1.299          | 3.126          | 4.500          | 1.500          |
| <b>T127-2/B</b><br>(T-160) | 15.11  | 5.000          | 3.504          | 3.465 | 6.142 | .630           | 2.008 | .394 | .500 | .626  | .669 | 1.299          | 3.126          | 4.500          | 1.500          |
| <b>T140-1/B</b><br>(T-171) | 18.55  | 5.512          | 4.252          | 4.213 | 7.598 | .748           | 2.008 | .500 | .500 | .626  | .827 | 1.575          | 3.626          | 6.000          | 1.252          |
| <b>T140-2/B</b><br>(T-169) | 22.79  | 5.512          | 4.016          | 3.976 | 7.598 | 1.126          | 2.008 | .689 | .571 | .689  | .827 | 1.575          | 3.626          | 6.000          | 1.252          |
| <b>T140-3/B</b><br>(T-162) | 30.91  | 5.512          | 5.000          | 4.961 | 7.598 | 1.250          | 2.244 | .748 | .689 | 1.000 | .827 | 1.575          | 3.626          | 6.000          | 1.252          |

FOR EXACT TOLERANCES AND MORE COMPLETE ENGINEERING DATA PLEASE REQUEST A SAVERA GUIDE RAIL CATALOG